



DAMEN STAN PONTOON® 6316

“DAMEN RIVERSTAR 7”

GENERAL

YARD NUMBER	523812
DELIVERY DATE	Stock
TYPICAL APPLICATIONS	Deck Cargo, RoRo Cargo
TYPICAL AREA OF OPERATION	Deep sea, Coastal waters, Harbours, Inland waters
CLASSIFICATION	⊕100 AT Pontoon, IWS for non-propelled and unmanned vessels
FLAG	K🇷🇺, Pontoon
OWNER	Russia Damen Shipyards Gorinchem

DIMENSIONS

LENGTH MOULDED	63,00 m
BEAM MOULDED	16,50 m
DEPTH MOULDED	3,50 m
DRAUGHT MAX	2,75 m
FREE DECK SPACE	1.032 m ²
DEADWEIGHT MAX.	2.190 ton

CAPACITIES

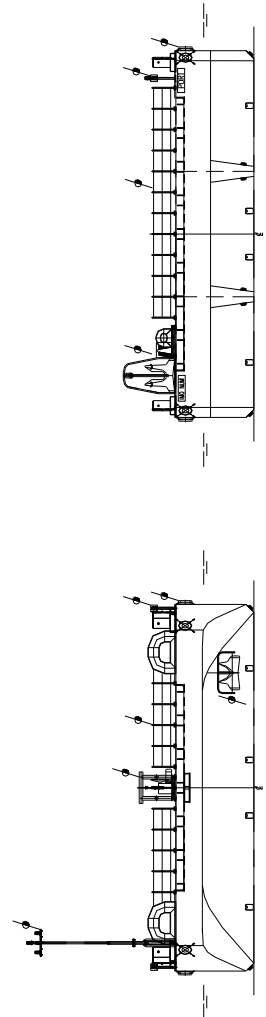
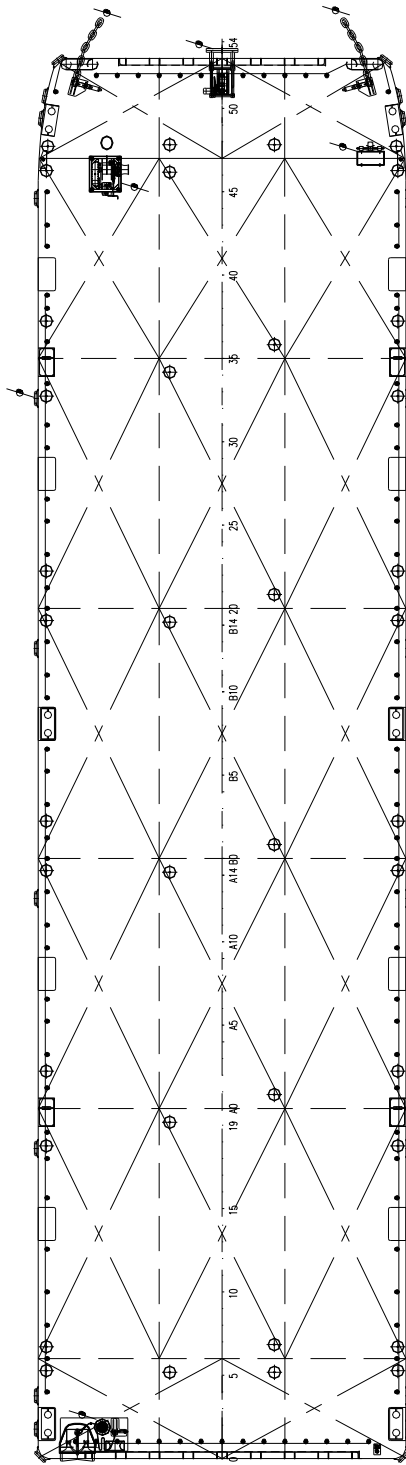
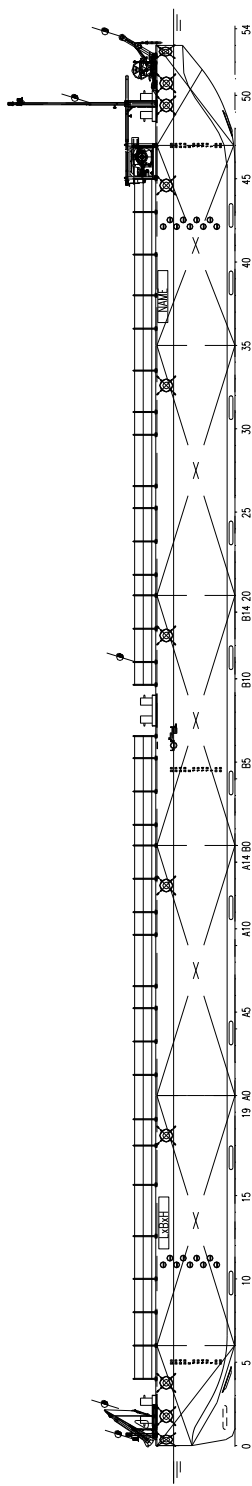
DECK LOAD	15 ton/m ²
DECK THICKNESS	16 mm extra heavy deck
VOID SPACES	19 pcs: 3.491 m ³

DESIGN CONDITIONS

SEA WATER TEMPERATURE	0° to +35° C
OUTSIDE AIR TEMPERATURE	-5° to +45° C

EXECUTION

TOWING BRACKETS	One on PS and one on SB at foredeck
FAIR LEADS	At the foreside of the towing brackets
BOLLARDS	6 pcs. standard, insert plates at every section
DRAUGHT MARKS	At fore, mid and aft on PS and SB every 20 cm
BOARDING LADDERS	2 on SB and 2 on PS in recesses of the hull
CATHODIC PROTECTION	Zinc anodes on underwater part of the hull
MANHOLES	Flush bolted manholes
EMERGENCY TOWING	Flush mounted towing pin in the bow
RAMP RECESS	RoRo ramp recess at bow (8 x 1.5m) and stern (8 x 1.5m)
LIFTING EYES	Four lifting eyes flush with main deck and covered with bolted steel plates to lift the pontoon
FENDERING	Tyre fender system
NAVIGATION LIGHTING	Navigation lights solar powered
RAILING	Removable stanchions with wire guard rails
ANCHOR / MOORING SYSTEM	On foreship (portside or starboard side) one anchor/mooring winch equipped with warping head, mooring lines, anchor and steel cable



DAMEN STAN PONTOON® 6316

"DAMEN RIVERSTAR 7"



DAMEN SHIPYARDS GORINCHEM

Member of the DAMEN SHIPYARDS GROUP



Industrieterrein Avelingen West 20
4202 MS Gorinchem

P.O. Box 1
4200 AA Gorinchem
The Netherlands

phone +31 (0)183 63 99 11
fax +31 (0)183 63 21 89

info@damen.nl
www.damen.nl