



DAMEN SHOALBUSTER® 3511

"DMS STORK"

GENERAL

BUILDING YEAR	2013
CLASSIFICATION	Bureau Veritas I 3/3 \otimes HULL \otimes MACH Tug Unrestricted Navigation AUT-UMS
FLAG	Dutch

DIMENSIONS

LENGTH O.A.	35.25 m
BEAM MOULDED	11.60 m
DEPTH	5.25 m
DRAFT MAX. AMIDSHIP	3.64 m
TONNAGE	600 GT / 180 NT

TANK CAPACITIES

FUEL OIL	374.4 m ³
FRESH WATER	42.0 m ³
HYDR. OIL	3.7 m ³
LUB OIL	4.4 m ³
BILGE WATER	2.2 m ³
DIRTY OIL	4.4 m ³
SEWAGE	23.6 m ³
GEAR OIL	2.2 m ³

PERFORMANCES (TRIALS)

BOLLARD PULL	70 tons
SPEED	11.6 knots

PROPULSION SYSTEM

MAIN ENGINES	2x Caterpillar 3516 B TA
TOTAL POWER	3840 kW (5150 hp) at 1600 rpm
PROPULSION	2x fixed pitch propellers in nozzles
DIAMETER	2700 mm
GEARBOX	Reintjes WAF 873 / 7.455 : 1
BOWTHRUSTER	294 kW (400 hp), hydraulically driven

AUXILIARY EQUIPMENT

AUXILIARY ENGINES	2x Caterpillar C-9 TA
GENERATOR	Leroy Somer, LSAM 46.2 M5
OUTPUT	2x 150 kVA, 50 Hz, 230/400 V

HYDRAULIC SET
FUEL SEPARATOR
INTERNAL FIFI SYSTEM
TRANSFER PUMPS

Caterpillar C18 TA, 500 kW at 2100 rpm
Alfa Laval type MAB 104, 1950 ltr/hr
CO₂ in the engine room
Fuel 50 m³/hr at 4.8 bar
Fresh water 50 m³/hr at 4.8 bar

DECK LAY-OUT

ANCHOR	2x 375 kg Pool (H.H.P.)
DECK CRANE	Heila 170-4S-L, remote controlled, capacity: 18,2 tons at 8,03 m 7,9 tons at 15,93 m
ANCHOR WINCH	Ridderinkhof, CAW-H-152, capacity 5 tons at 10 m/min.
AH TOWING WINCH	Ridderinkhof AHW-H-1000, capacity: P= 50 tons at 10 m/min. P=100 tons at 5 m/min. B=100 tons
TUGGER WINCH	Brevini, 8 tons at 4.5 m/min.
TOWING PINS	Karm Fork, 160 tons SWL
FIFI PUMP	1200 m ³ /hr
FIFI MONITOR	2x monitor Albach EL 377
STERN ROLLER	5000 mm x 980 mm, 100 tons SWL
SPARK ARRESTORS	fitted (external)

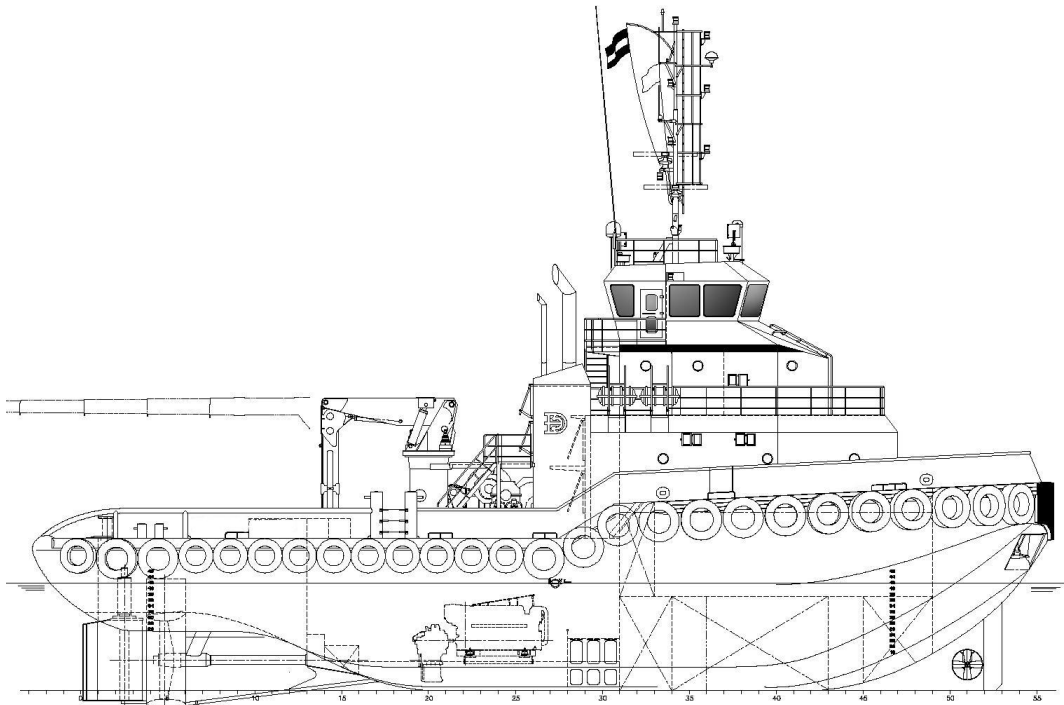
ACCOMMODATION

Heated and air-conditioned living spaces for 11 persons, consisting three single crew cabins and four double crew cabins, a galley, a mess room and sanitary facilities.

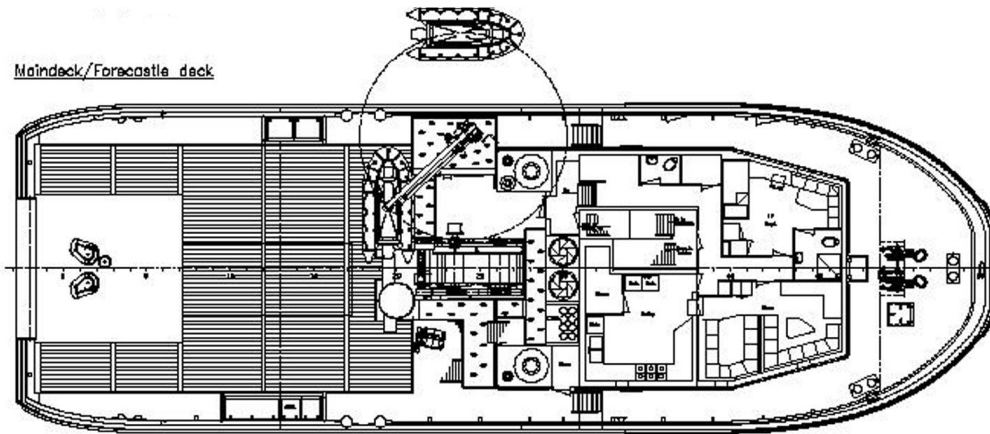
NAUTICAL AND COMMUNICATION EQUIPMENT

All systems and equipment according to GMDSS Area 3.

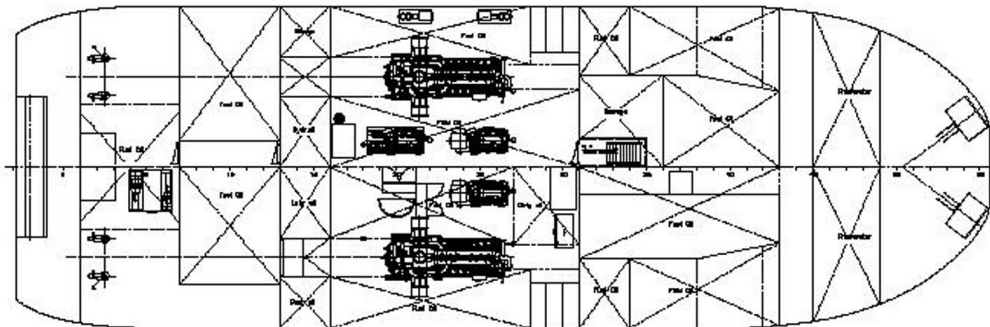
SEARCHLIGHTS	2x 1000 W
NAVIGATION EQUIPMENT	Magnetic compass, gyro compass, 2x radar, GPS, autopilot, echo sounder, speedlog, watch alarm, chart plotter.
COMMUNICATION	3x VHF, 2x handheld VHF, Navtex, Inmarsat-C, SSB, Iridium, intercom, PA-system, LRIT, AIS, SSAS.
ADDITIONAL EQUIPMENT	TV antenna satellite system.



Maindeck/Forecastle deck



Below maindeck



DAMEN SHOALBUSTER® 3511

"DMS STORK"

DAMEN

DAMEN MARINE SERVICES

Member of the DAMEN SHIPYARDS GROUP



Industrieterrein Avelingen West 20
4202 MS Gorinchem

P.O. Box 1
4200 AA Gorinchem
The Netherlands

phone +31 (0)183 65 46 60
fax +31 (0)183 63 94 40

info-dms@damen.com
www.dms.nl