



## DAMEN FAST CREW SUPPLIER<sup>®</sup> 2610 "TWIN AXE 1"

### GENERAL

BUILDING YEAR	2012
CLASSIFICATION	Bureau Veritas I ✪Hull •MACH Light Ship / Fast Utility Vessel Sea Area 3
FLAG	Dutch / IVW

### DIMENSIONS

LENGTH O.A.	25.60 m
BEAM O.A.	10.27 m
DEPTH	2.90 m
DRAFT MAX.	2.20 m

### TANK CAPACITIES

FUEL OIL	14.2 m <sup>3</sup>
FUEL OIL TRIM TANK	8.0 m <sup>3</sup>
FRESH WATER	1.8 m <sup>3</sup>
WASTE WATER	0.5 m <sup>3</sup>

### DECK CAPACITIES

DECK CARGO	15 tons
CARGO DECK AREA	90 m <sup>2</sup>
MAX. DECK LOAD	1.5 m <sup>2</sup>

### PERFORMANCES (TRIALS)

SPEED	25.1 knots
MAXIMUM RANGE	700 nm at max. speed

### PROPULSION SYSTEM

MAIN ENGINES	2x Caterpillar C32 TTA
TOTAL POWER	1500 - 1790 bkW (2400 bhp)
PROPULSION	Fixed-pitch propellers
GEARBOXES	2x Reintjes ZWVS series (two speed)
BOWTHRUSTERS	2x 50 kW hydraulically driven

### ELECTRICAL EQUIPMENT

NETWORK	24V d.c., 230V/400V 50 Hz a.c.
GENERATOR SET	2x 22.5 kW / 28.0 kVA

### DECK LAY-OUT

ANCHOR EQUIPMENT	1x 150 kg HHP with chain and line
FENDERING	Rubber "D" type and heavy duty foam filled bow fender
DECK CRANE	Heila HLM 20-2S
MOB RECOVERY SYSTEM	Electrically operated elevation platform

### ELECTRICAL EQUIPMENT

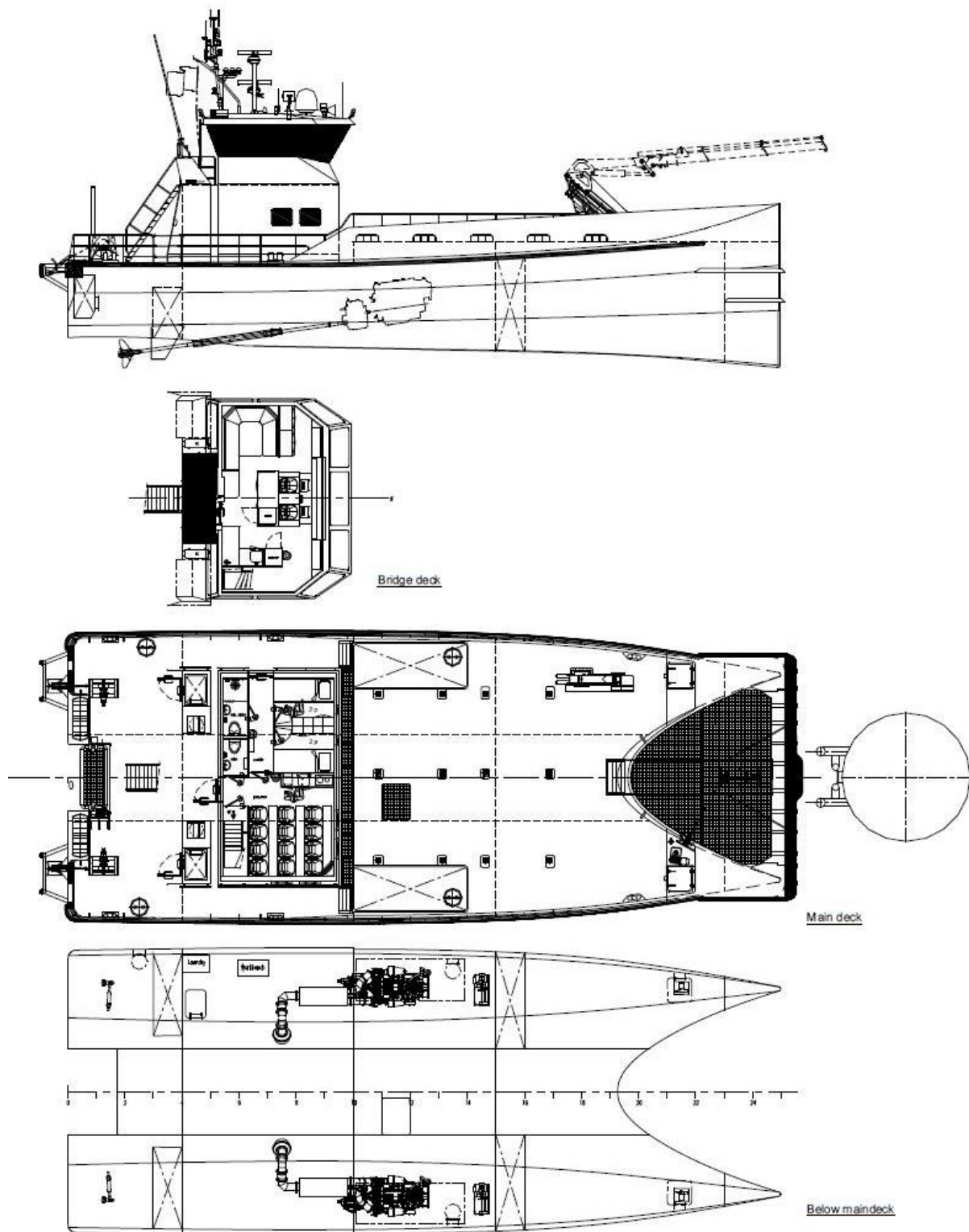
ENGINE ROOM VENTILATION	12.000 m <sup>3</sup> /hr in each engine room
GENERAL SERVICE PUMPS	Electrically driven, 400V, Azcuc CA 50

### ACCOMMODATION

12 industrial seats, crew cabin, captain's cabin, pantry, day room and toilet

### NAUTICAL AND COMMUNICATION EQUIPMENT

All systems and equipment according to GMDSS Area 1.



# DAMEN FAST CREW SUPPLIER® 2610

"TWIN AXE 1"

## DAMEN

DAMEN MARINE SERVICES

Member of the DAMEN SHIPYARDS GROUP 

Industrieterrein Avelingen West 20  
4202 MS Gorinchem

P.O. Box 1  
4200 AA Gorinchem

The Netherlands

phone +31 (0)183 65 46 60  
fax +31 (0)183 63 94 40

info-dms@damen.com  
www.damenmarineservices.com

© No part of the leaflet may be reproduced in any form, by print, photo print, microfilm, or any other means, without written permission from Damen Shipyards Gorinchem. Details believed to be correct but are not guaranteed.