

# Azimuth Stern Drive Tug 2312

“NAVIGATOR”



## GENERAL

Yard number	513616
Delivery date	Q3 2022
Basic functions	Towing, mooring and fire-fighting operations
Classification	Bureau Veritas I ✕ HULL • MACH Escort Tug (Bollard pull = 70 t, maximum steering force = 65 t, maximum braking force = 49 t, maximum escort speed = 10 kn) Unrestricted Navigation AUT UMS Inwater Survey Fire Fighting Ship 1 Green Passport EU
Painting	Epoxy paint system
Flag	The Netherlands
Owner	Damen Marine Services B.V.

## DIMENSIONS

Length overall	22.80 m
Beam overall	12.03 m
Depth at sites	4.40 m
Draught aft	5.40 m
Displacement	485 t
(98% consumables)	
Scantlings	Hull 10 mm, sheerstrake 15 mm

## TANK CAPACITIES

Fuel oil (incl. long range tanks)	78.4 m <sup>3</sup>
Fuel oil	54.6 m <sup>3</sup>
Fresh water	7.8 m <sup>3</sup>
Sewage	5.1 m <sup>3</sup>
Dirty oil	1.5 m <sup>3</sup>
Lubrication oil	1.5 m <sup>3</sup>
Bilge water	3.0 m <sup>3</sup>
Foam	6.1 m <sup>3</sup>
Urea	2.5 m <sup>3</sup>

## PERFORMANCES

Bollard pull ahead	70.0 t
Bollard pull astern	65.0 t
Speed ahead	13.0 kn

## PROPULSION SYSTEM

Main engines	2x Caterpillar 3512C TA HD/D
Total power	3804 bkW (5102 bhp) at 1800 rpm
Azimuth thrusters	Kongsberg Maritime US 205
Clutches (on-off type)	Kongsberg Maritime 'built in' type or equal
Propeller diameter	2800 mm
Forced ventilation	60.000 m <sup>3</sup> /h
Exhaust aftertreatment	Damen SCR system, IMO Tier III compliant

## AUXILIARY EQUIPMENT

Generator sets	2x Caterpillar C4.4 TA, 400 V, 103 kVA, 50 Hz
Bilge pump	Azcue CA-32/05 up to 10 m <sup>3</sup> /h
General service pumps	2x Azcue CA-50/3A up to 27 m <sup>3</sup> /h
Fuel oil pump	Azcue CA40-1B up to 12.0 m <sup>3</sup> /h
Fuel oil filters	2x Coalester filters incl. water separator
Fuel oil purifiers	2x CJC PTU3 27/81, 1920 l/h each
Fresh water pressure set	Azcue MO-19/10
Cooling system	Box cooling and keel cooling + anti-growth system
Hydraulic system	Double main engine driven pumps
Fifi set	Main engine driven pumps 1200 - 1400 m <sup>3</sup> /h
Fifi monitors	2x 1200 m <sup>3</sup> /h water/foam

## DECK LAY-OUT

Anchors	2x 360 kg Pool (High Holding Power)
Anchor winches	10 m/min
Towing winch	Hydraulically driven double drum, pull up to 35 ton and speed up to 40 m/min on second layer, 175 ton brake holding force
Fendering	D-fender at sides, cylindrical fender at transom corners, cylindrical and W-block bow fender

## ACCOMMODATION

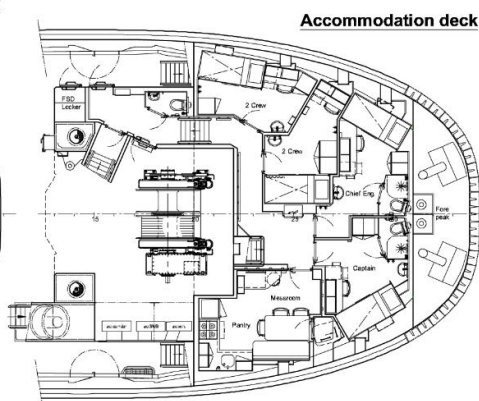
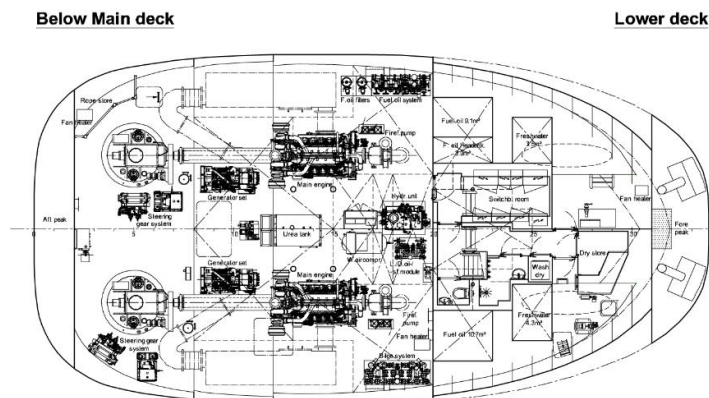
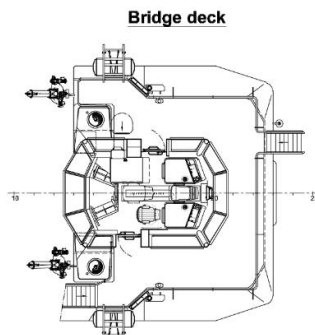
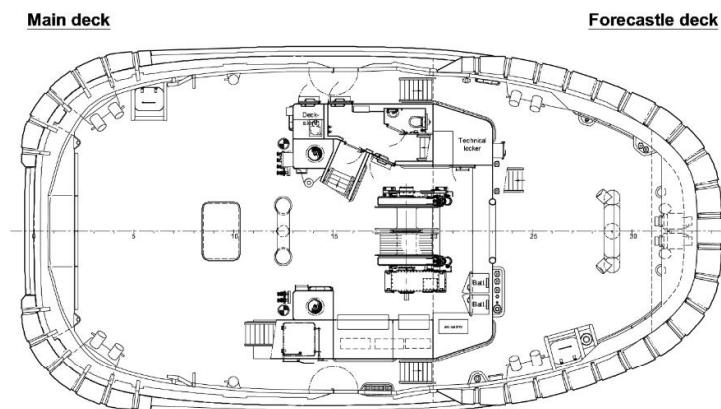
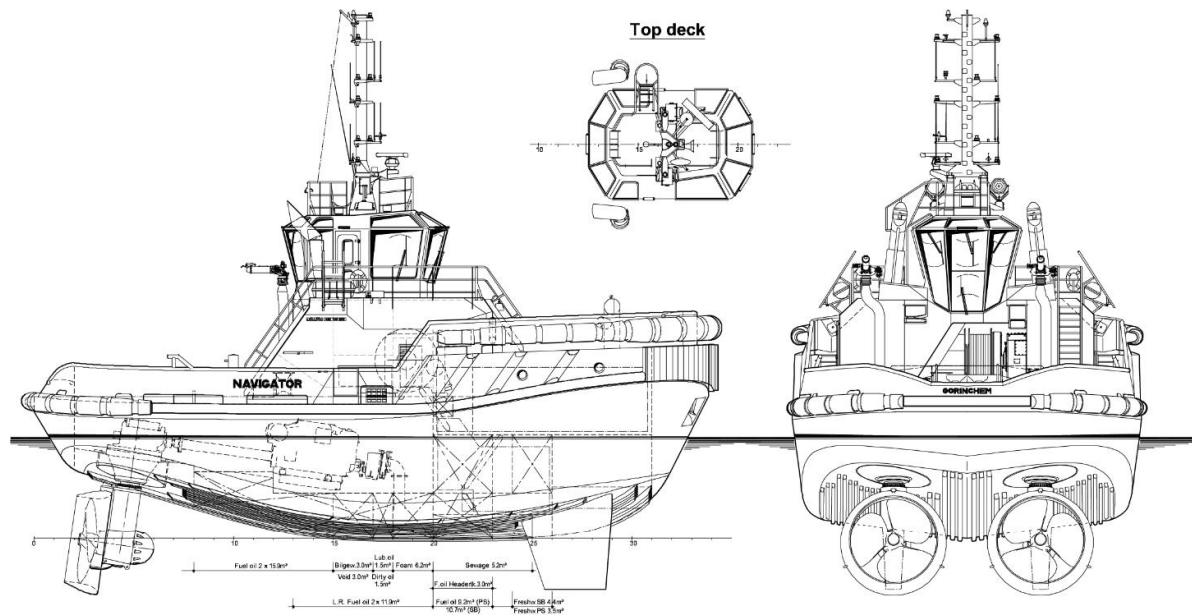
For 6 persons (MLC 2006 compliant), completely insulated and finished with durable modern linings, acoustical ceiling in the wheelhouse and floating floors. Air-conditioned accommodation with four crew cabins and galley/mess at accommodation deck. Switchboard room and sanitary facilities at lower deck.

## NAUTICAL AND COMMUNICATION EQUIPMENT

Searchlights	2x Norselight SH470 2000 W
Radar system	Furuno FAR 1518-BB
ECDIS	Furuno FMD-3200
Compass	Cassens & Plath Reflecta 11
Satellite compass/GPS	Simrad GN70/HS80A
Autopilot	Simrad AP-70
Echosounder	Furuno FE-800
VHF radio telephone	2x Cobham Sailor 6222, one with DSC
VHF portable radio telephone	Sailor SP3540
Navtex	Furuno NX-700B
SSB	Furuno FS-1575
AIS	Furuno FA-170
EPIRB	Jotron Tron-60S
SART	Jotron Tronsart20
Remote monitoring	Ready for Damen Triton
Anemometer	Gill Instruments GMX 500

# Azimuth Stern Drive Tug 2312

“NAVIGATOR”



**DAMEN**

Damen.com

©No part of the leaflet may be reproduced in any form, by print, photoprint, microfilm, or any other means, without written permission from Damen Shipyards Group

