



## DAMEN STAN PONTOON® 9127

### GENERAL

YARDNUMBER	522702
TYPICAL APPLICATIONS	Deck Cargo, RoRo Cargo
TYPICAL AREA OF OPERATION	Deep sea, Coastal waters, Harbours, Inland waters
CLASSIFICATION	Lloyd's Register + 100 AT Pontoon, *IWS Descriptive note: Loading / unloading bottom aground
FLAG	St. Vincent and the Grenadines

### DIMENSIONS

LENGTH MOULDED	91.50 m
BEAM MOULDED	27,40 m
DEPTH MOULDED	6,10 m
DRAUGHT MAX.	4,90 m
DEADWEIGHT MAX.	9.900 ton

### CAPACITIES

DECK LOAD	20 ton/ m <sup>2</sup>
BALLAST TANKS	18 pcs: 9.903 m <sup>3</sup>
DECK THICKNESS	20 mm extra heavy deck

### BALLAST SYSTEM

BALLAST PIPES AND VALVES	DN 250
VALVE OPERATION	Manually operated from walkway in the center line void
DE-AERATION	Removable caps mounted on flanges. Flush deck when caps are removed
SOUNDING	By means of opening of the manholes

### DESIGN CONDITIONS

SEA WATER TEMPERATURE	0° to +35° C
OUTSIDE AIR TEMPERATURE	-5° to +45° C

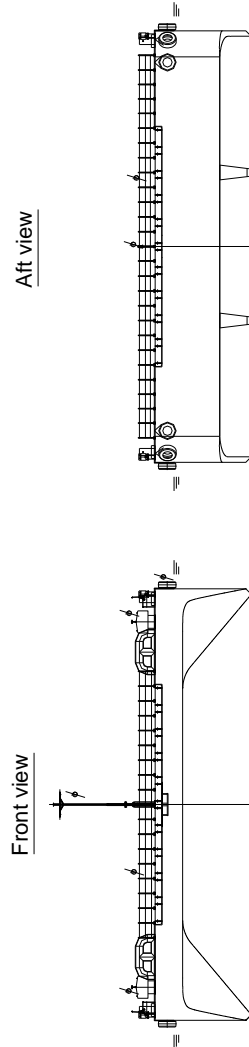
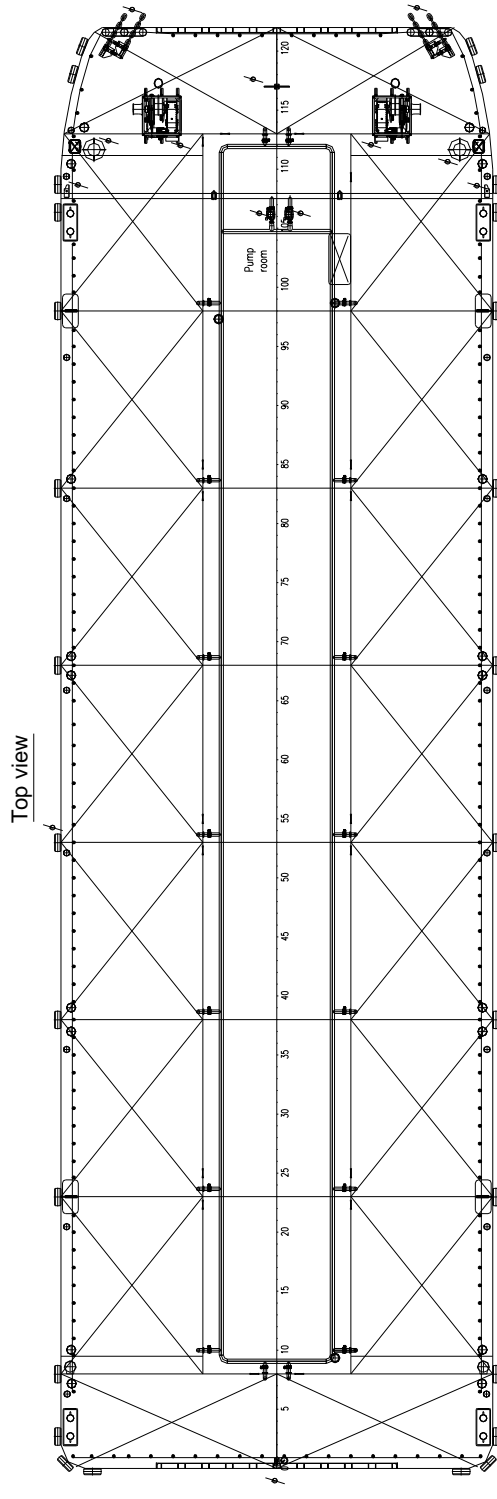
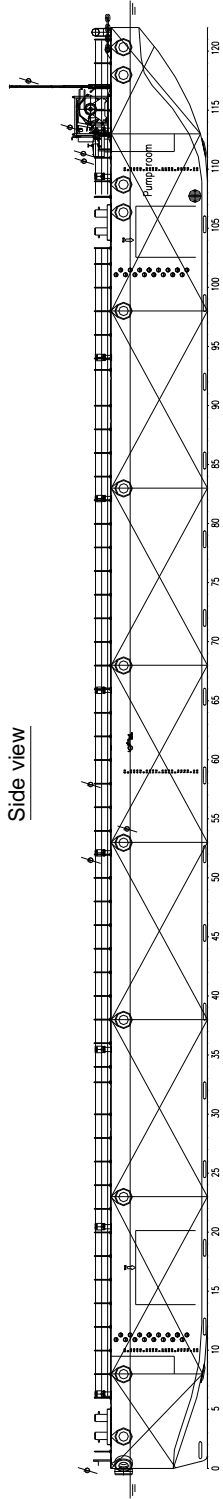
### STANDARD EXECUTION

BALLAST RING LINE	Ballast ring line DN 250 are provided
DIRTY OIL	A dirty oil tank and manual pump is provided
TOWING BRACKETS	Two on PS and two on SB, at fore deck
EMERGENCY TOWING	An emergency towing connection is provided
FAIR LEADS	At the fore side of the towing brackets fairleads are applied
MANHOLES	Flush single point closing manholes in main deck
ENTRANCE PUMP ROOM	Gas-spring hatch on coaming
RAMP RECESS	RoRo ramp recess at bow (10x1,5) and stern (10x1,5 m)
BOARDING LADDERS	2 on SB and 2 on PS in recesses of the hull
BOLLARDS	4 pcs. double bollards
HOISTING EYES	Integrated hoisting eyes to lift the pontoon
DRAUGHT MARKS	At fore, midship and aft on PS and SB every 20 cm
CATHODIC PROTECTION	Zinc anodes on underwater part of the hull

### OPTIONAL EQUIPMENT

RAMP PANELS	1,5 meter width and 8 meter length
RAILINGS	Removable stanchions with wire guard rails
FENDERING	Used tyre fenders
MAST	A mast and light stands for navigation lights
BALLAST PUMPS	Two 400 m <sup>3</sup> /h ballast pump
DE-AERATION CAPS	De-aeration caps are provided
GENERATOR SET	CAT C4.4 generator set
LIGHTING	Lighting in pump room and center void
WINCHES	anchors / Mooring winches
ANCHORS	anchors and steel wires
TOWING BRIDLE	Towing bridle and emergency towing bridle
RECOVERY WINCH	At the bow for retrieval of towing bridle

\*Mentioned deadweight is excluding optional equipment



# DAMEN STAN PONTOON® 9127

**DAMEN**

DAMEN MARINE SERVICES

Member of the DAMEN SHIPYARDS GROUP



Industrieterrein Avelingen West 20  
4202 MS Gorinchem

P.O. Box 1  
4200 AA Gorinchem  
The Netherlands

phone +31 (0)183 65 46 60  
fax +31 (0)183 63 94 40

info-dms@damen.com  
www.damenmarineservices.com