



DAMEN FAST CREW SUPPLIER® 2008

“SEA TWIN 2”

GENERAL

BUILDING YEAR	2016
CLASSIFICATION	Bureau Veritas
BASIC FUNCTIONS	Crew and Cargo duties
HULL MATERIAL	Aluminium
SUPER STRUCTURE	Aluminium
FLAG	U.K.

DIMENSIONS

LENGTH O.A.	19.7 m
BEAM O.A.	8.2 m
DEPTH	2.9 m
DRAFT MAX.	2 m
TONNAGE	39.42 GT / 39.42 NT
CARGO DECK AREA	55 m ²
MAX DECK LOAD	1.5 t/m ²
CREW	3
INDUSTRIAL PERSONNEL	12

TANK CAPACITIES

FUEL OIL	13.0 m ³
FRESH WATER	1.1 m ³
WASTE WATER	1.2 m ³
BILGE WATER/DIRTY OIL	1.3 m ³

DECK CAPACITIES

DECK LOAD	3 tonnes aft/4 tonnes forward
DECK CARGO RAISED FOREDECK	Max 3 tonnes

PERFORMANCES (TRIALS)

SPEED	24.0 knots
RANGE AT MAX SPEED	670 nm.

ABOVE FIGURES CAN VARY AFTER EXPOSURE FROM AND/OR DURING EXTERNAL CIRCUMSTANCES

PROPULSION SYSTEM

MAIN ENGINES	2x MTU 8V2000 M72
TOTAL POWER	1440 bkW
PROPULSION	2 x Fixed-pitch propellers
GEARBOX	2x Reintjes ZWWS series (two speed)

SHIP SYSTEMS

ENGINE ROOM VENTILATION	5.000 /hr in each engine room
GENERAL SERVICE BILGE PUMP	Electrically driven. 400V, Azcue CA 50 / 15 m ³ / hr at 0.8 bar
FIRE EXTINGUISHER	Hand operated fire extinguishers Fixed Fi-Fi system in engine rooms (Novec 1230)
GENERATOR SET	2 sets / 22.5 ekW – 28.0 KVA

DECK LAY-OUT

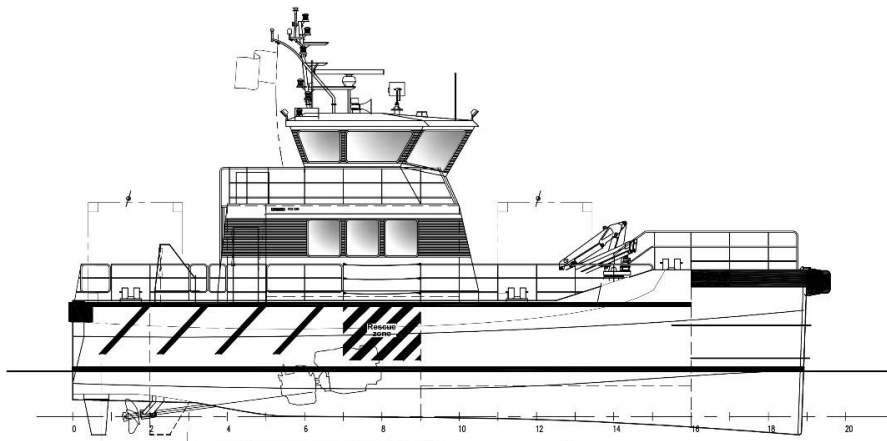
ANCHOR EQUIPMENT	1x 120 kg HHP with chain and line
FENDERING	Rubber “D” type and heavy duty bow fender
DECK CRANE	Heila HLM 5-2S
LANDING BEAM	Holding Fore Fender, design load 30 tonnes

ACCOMMODATION

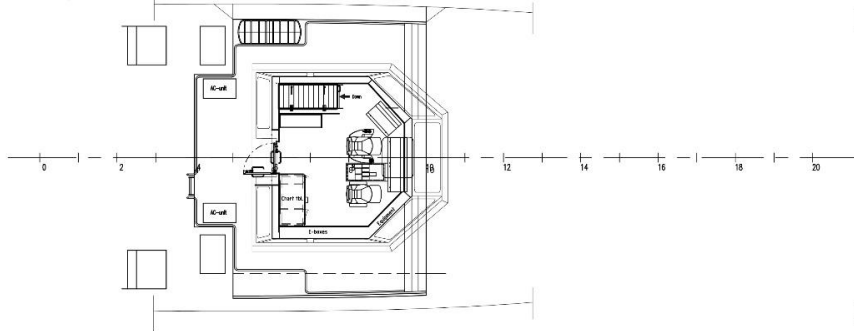
MAIN DECK	12 seats, wet gear room, pantry and store
AIR-CONDITIONING	78.500 BTU

NAUTICAL AND COMMUNICATION EQUIPMENT

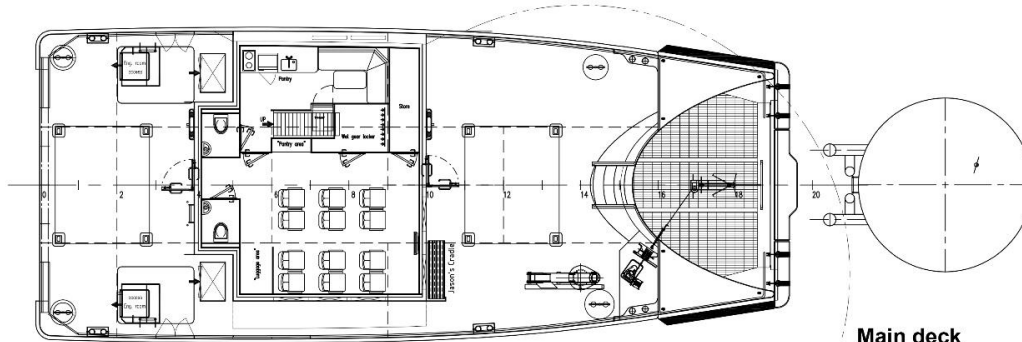
SEARCHLIGHTS	1
RADAR	1x X Band
ECDIS	1x
CHART PLOTTER	1x
GPS	2x
AIS	1x
COMPASS	1x Magnetic
ECHO SOUNDER	1x
CCTV	1x
EXTERNAL COMMUNICATION	GMDSS A1
WI-FI SYSTEM	
WEATHER SYSTEM	



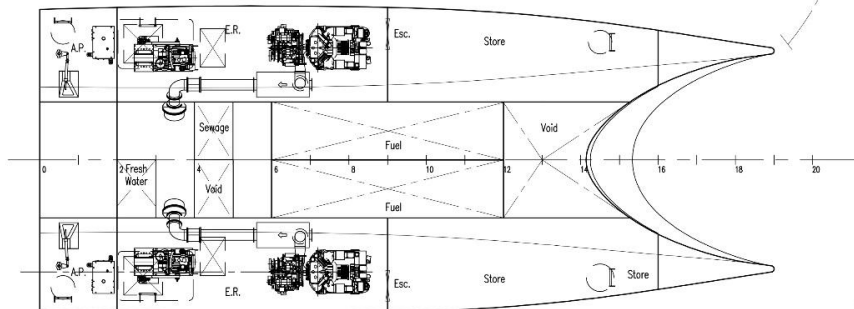
Profile



Bridge deck



Main deck



Lower deck

DAMEN FAST CREW SUPPLIER[®] 2008

"SEA TWIN 2"

DAMEN

DAMEN MARINE SERVICES

Member of the DAMEN SHIPYARDS GROUP



Avelingen West 20
4202 MS Gorinchem

P.O. Box 1
4200 AA Gorinchem
The Netherlands

phone +31 (0)183 65 46 60
fax +31 (0)183 63 94 40

info-dms@damen.com
www.damenmarineservices.com